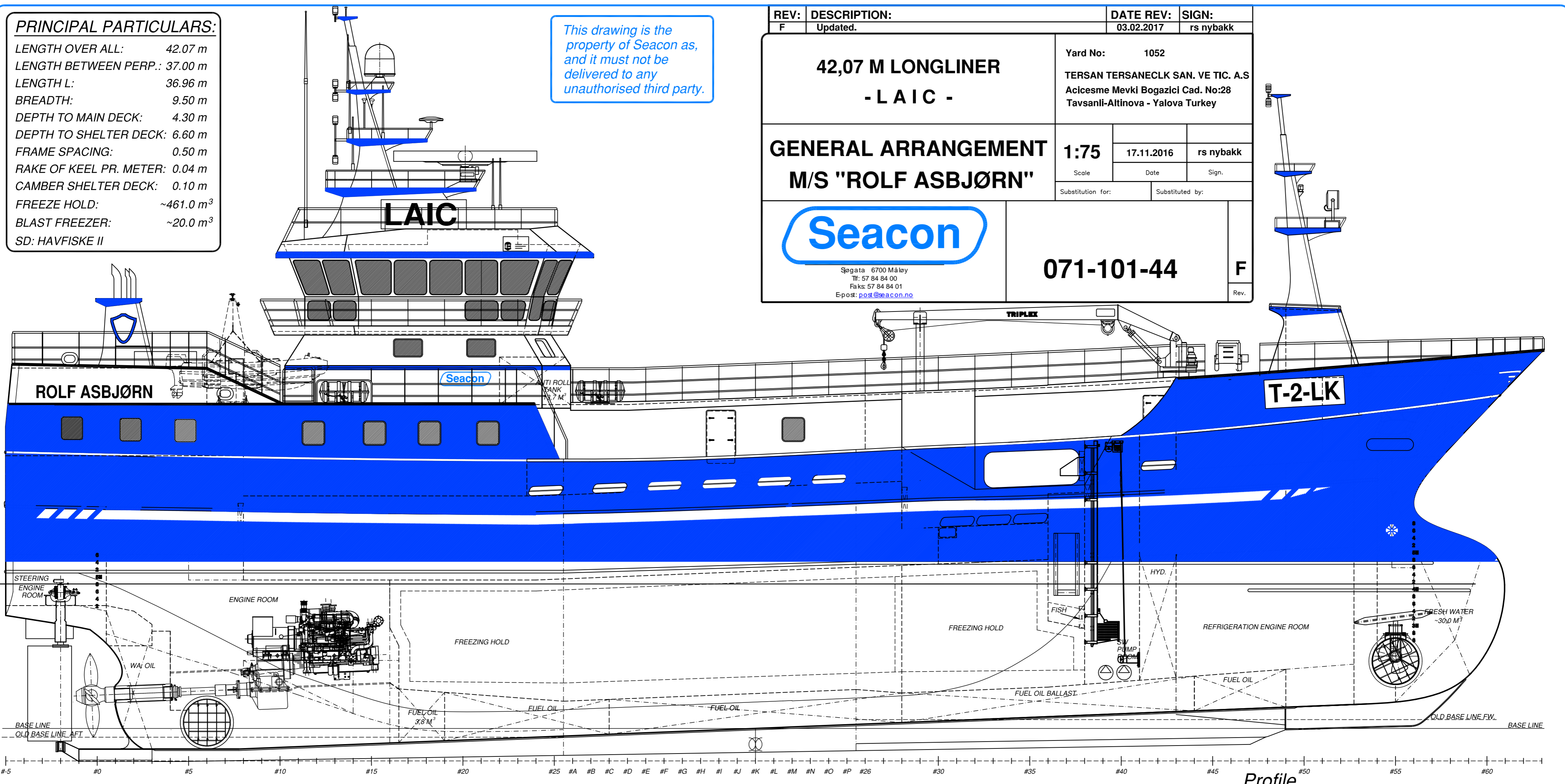


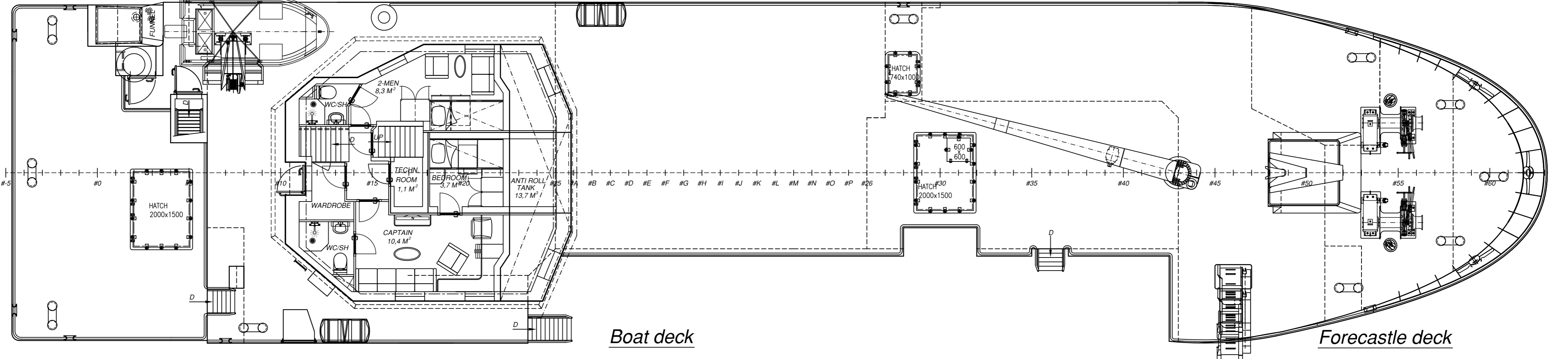
**PRINCIPAL PARTICULARS:**  
 LENGTH OVER ALL: 42.07 m  
 LENGTH BETWEEN PERP.: 37.00 m  
 LENGTH L: 36.96 m  
 BREADTH: 9.50 m  
 DEPTH TO MAIN DECK: 4.30 m  
 DEPTH TO SHELTER DECK: 6.60 m  
 FRAME SPACING: 0.50 m  
 RAKE OF KEEL PR. METER: 0.04 m  
 CAMBER SHELTER DECK: 0.10 m  
 FREEZE HOLD: ~461.0 m<sup>3</sup>  
 BLAST FREEZER: ~20.0 m<sup>3</sup>  
 SD: HAVFISKE II

*This drawing is the property of Seacon as, and it must not be delivered to any unauthorised third party.*

REV: F	DESCRIPTION: Updated.	DATE REV: 03.02.2017	SIGN: rs nybakk
<b>42,07 M LONGLINER</b>		Yard No: 1052	
<b>- LAIC -</b>		TERSAN TERSANECLK SAN. VE TIC. A.S Acilcesme Mevki Bogazici Cad. No:28 Tavsanli-Altinova - Yalova Turkey	
<b>GENERAL ARRANGEMENT</b>		Scale: 1:75	Date: 17.11.2016
<b>M/S "ROLF ASBJØRN"</b>		Sign: rs nybakk	
<b>Seacon</b>		Substitution for:	Substituted by:
		071-101-44	F
		Sogata: 6700 Målay Tlf: 57 84 84 00 Faks: 57 84 84 01 Epost: post@seacon.no	

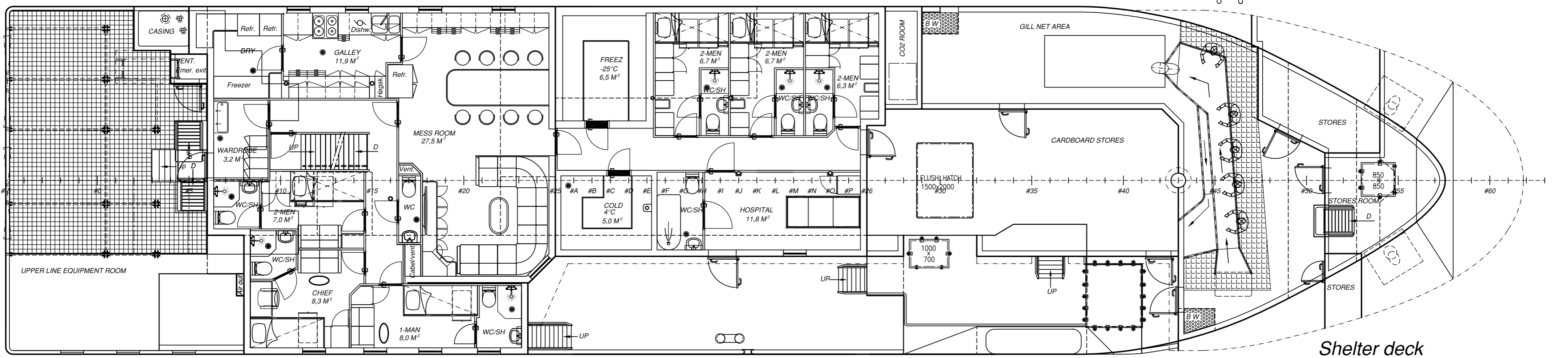


Profile

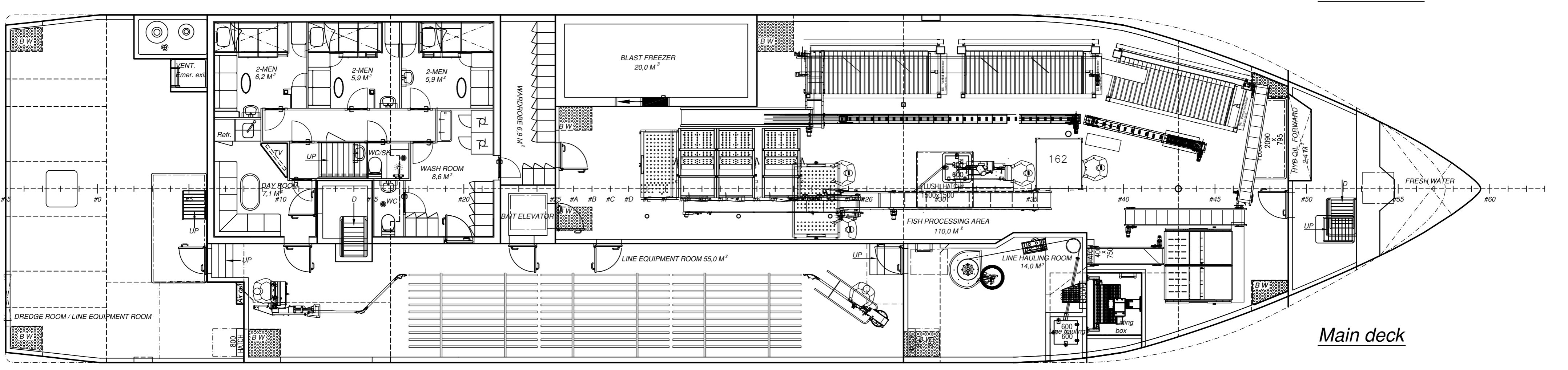


Boat deck

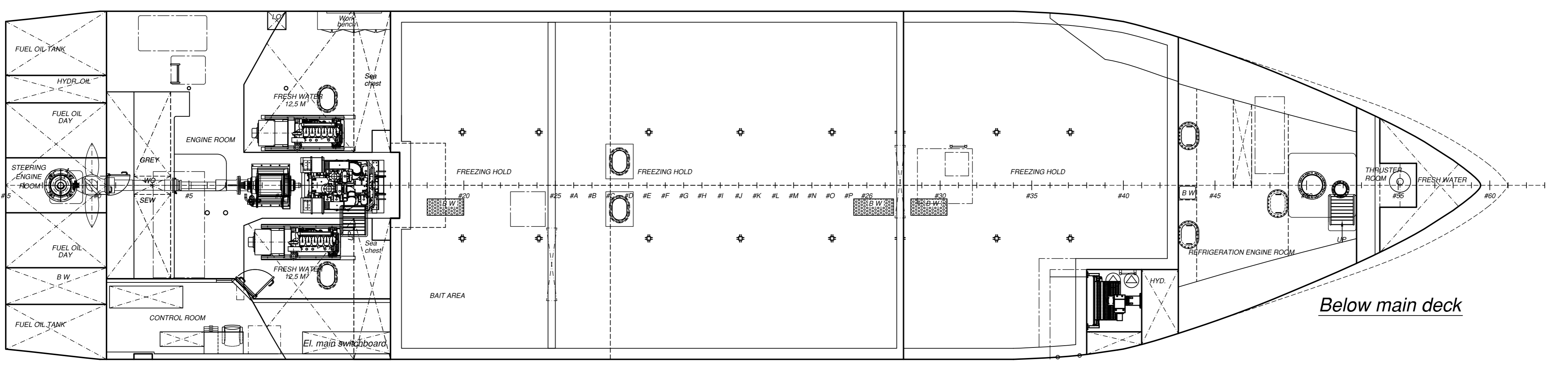
Forecastle deck



Shelter deck



Main deck



Below main deck