

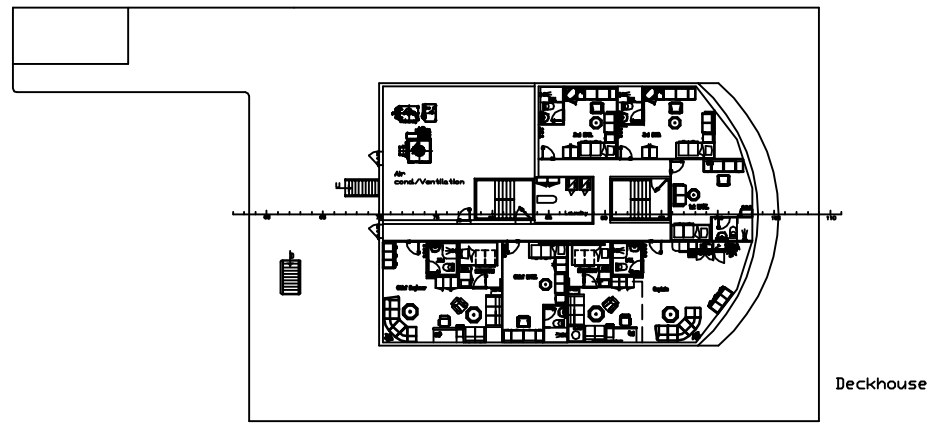
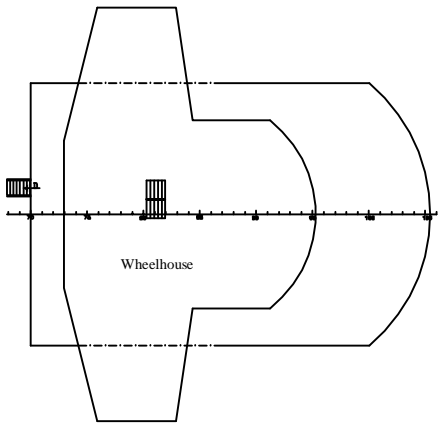
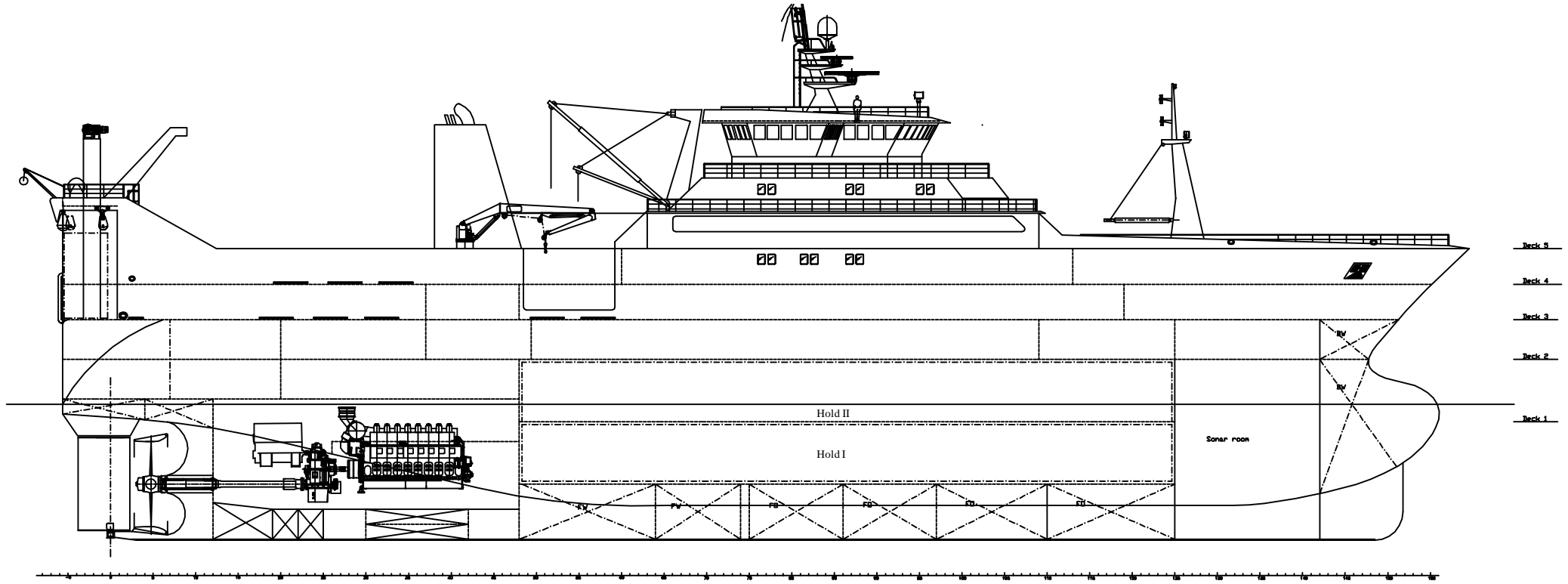
Main dimensions:

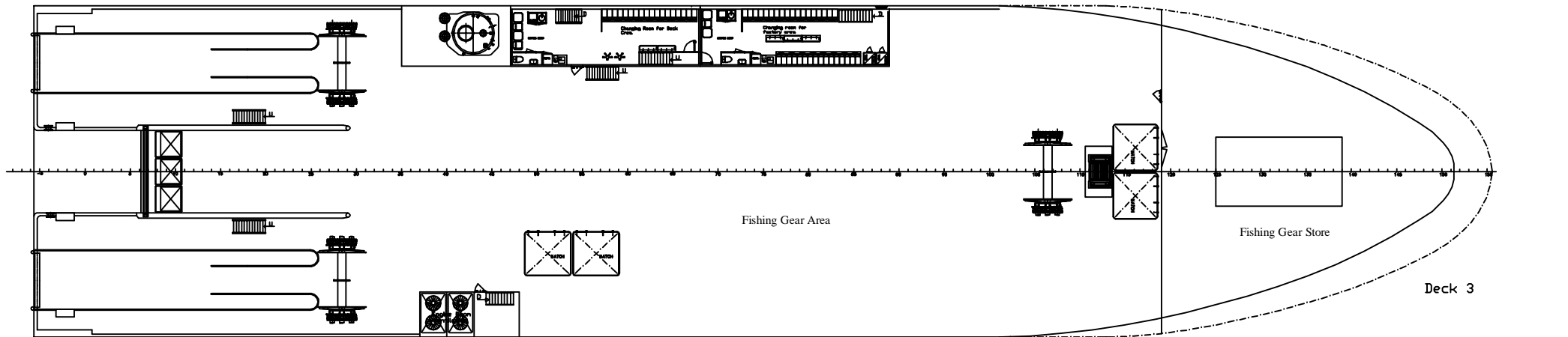
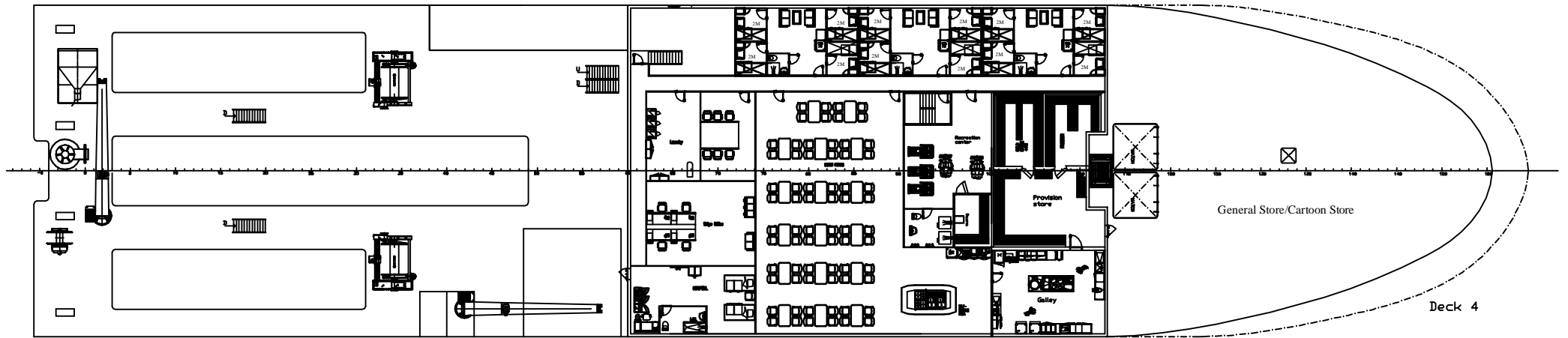
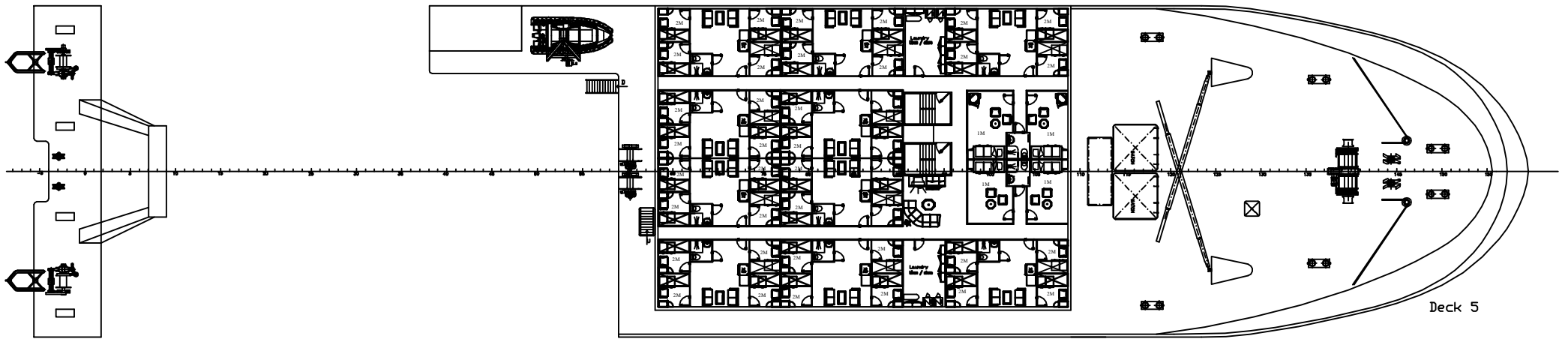
Length o.a.	95.00 m
Length Between p.p.	83.50 m
Beam	22.00 m
Depth Deck 1	5.90 m
Depth Deck 2	10.30 m
Depth Deck 3	13.10 m
Frame spacing	0.60 m

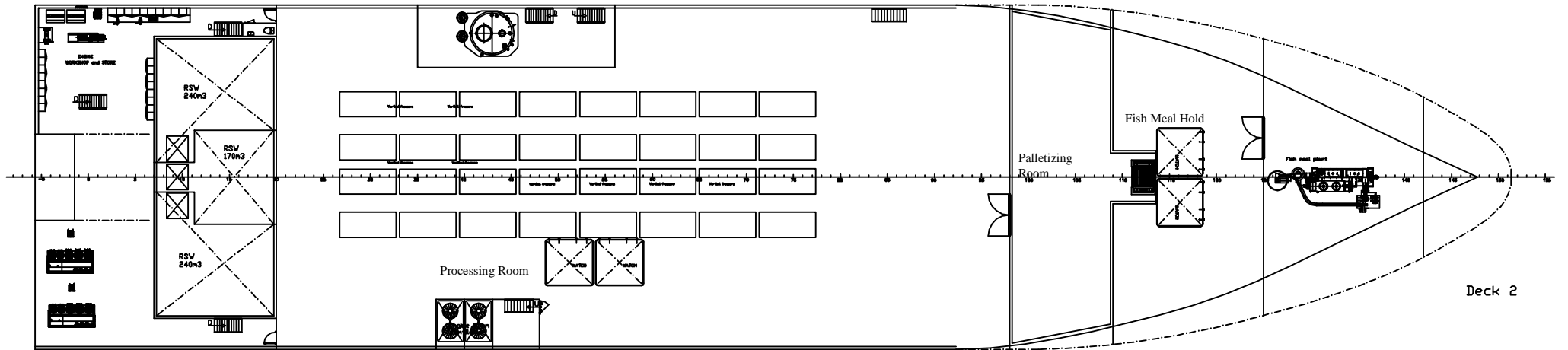
Crew 114 persons

Freezing Hold I	2700 m ³
Freezing Hold II	3200 m ³

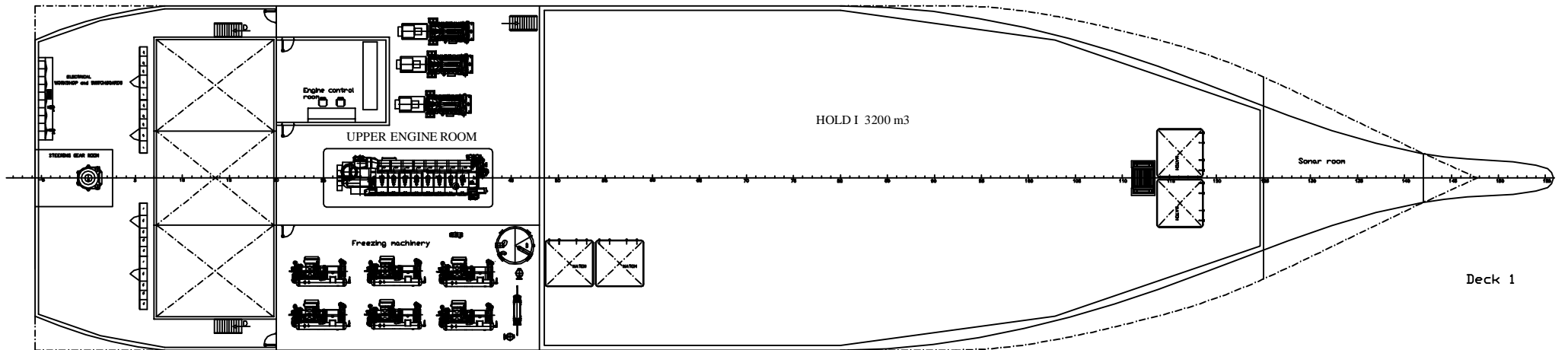
	TRAWLER - PROCESSOR		DATE
	GENERAL ARRANGEMENT		28.05.10
PROJECT NO: 10-9522 DRAWING NO: 010-01	FORM: A1 SCALE: 1:250	SHEET NO: 0 TOTAL SHEETS: 1(1)	DESIGNER: CS CHECKER: W







Deck 2



Deck 1

