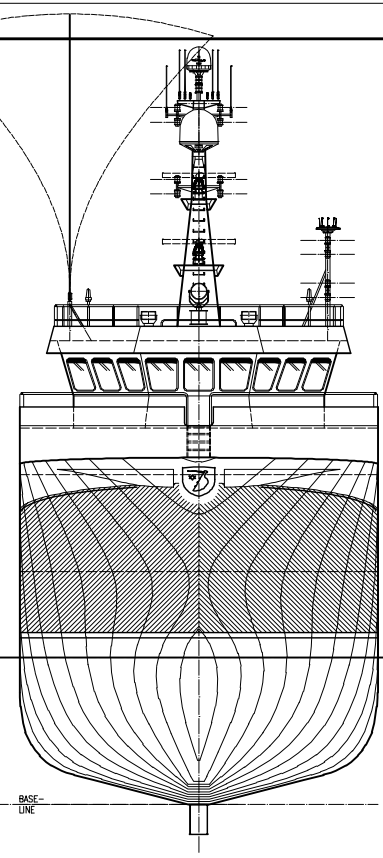
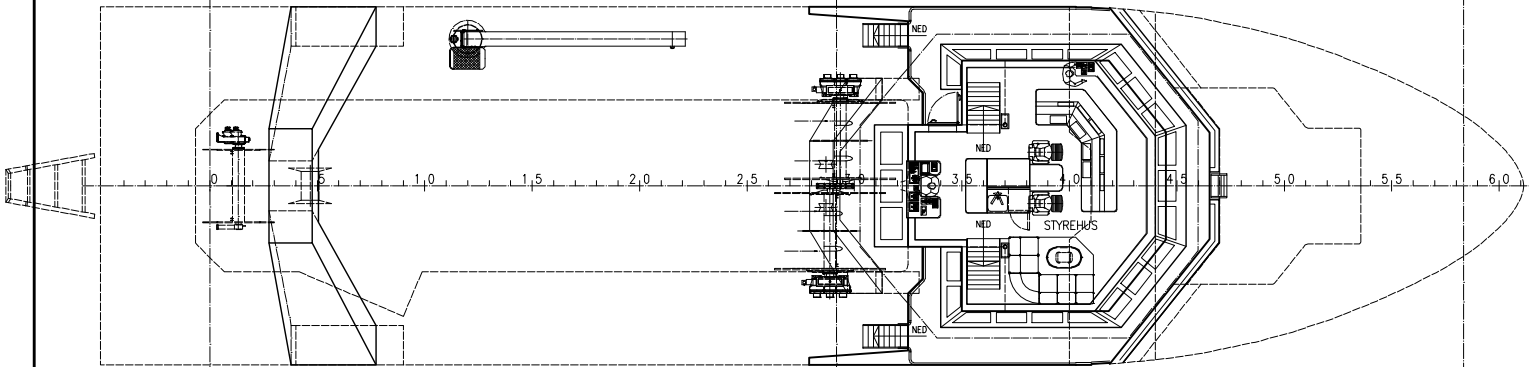


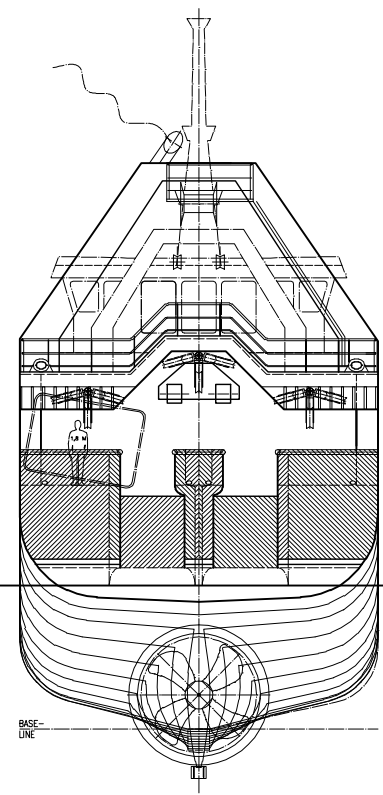
PROFIL



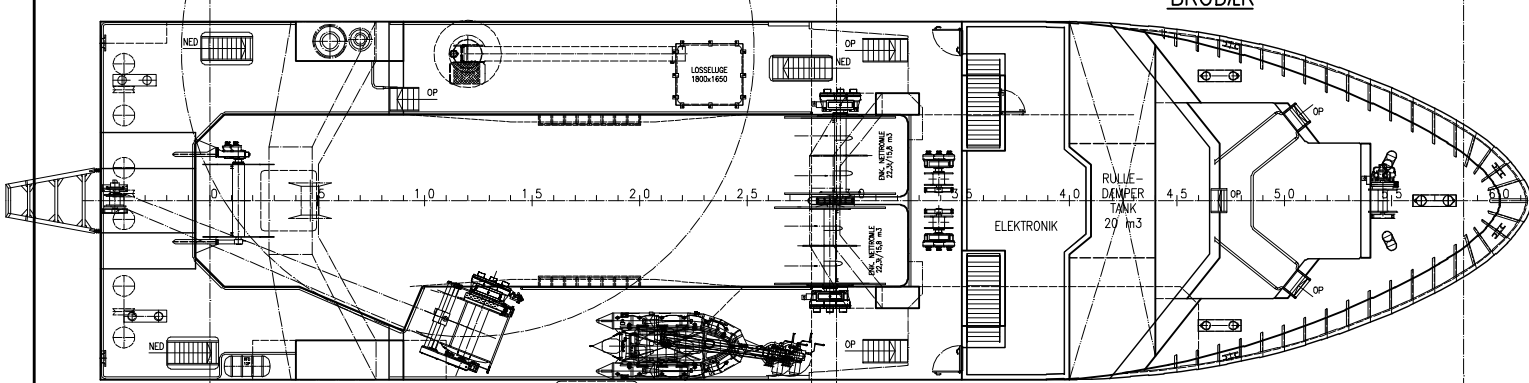
SET FRA FOR



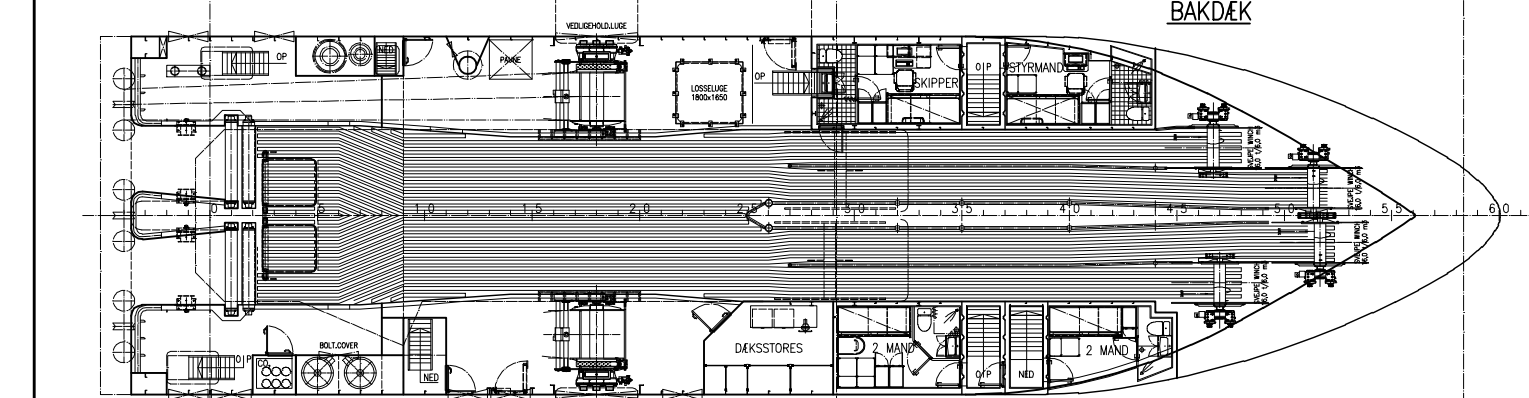
BRODÆK



SET FRA AGTER



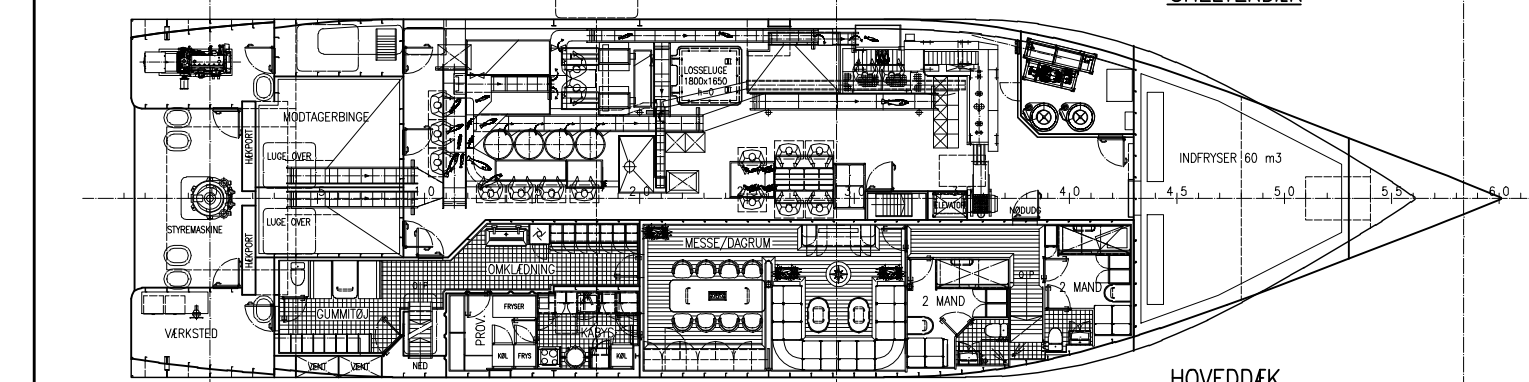
BAKDÆK



SHELTERDÆK

**KAPACITETER:**

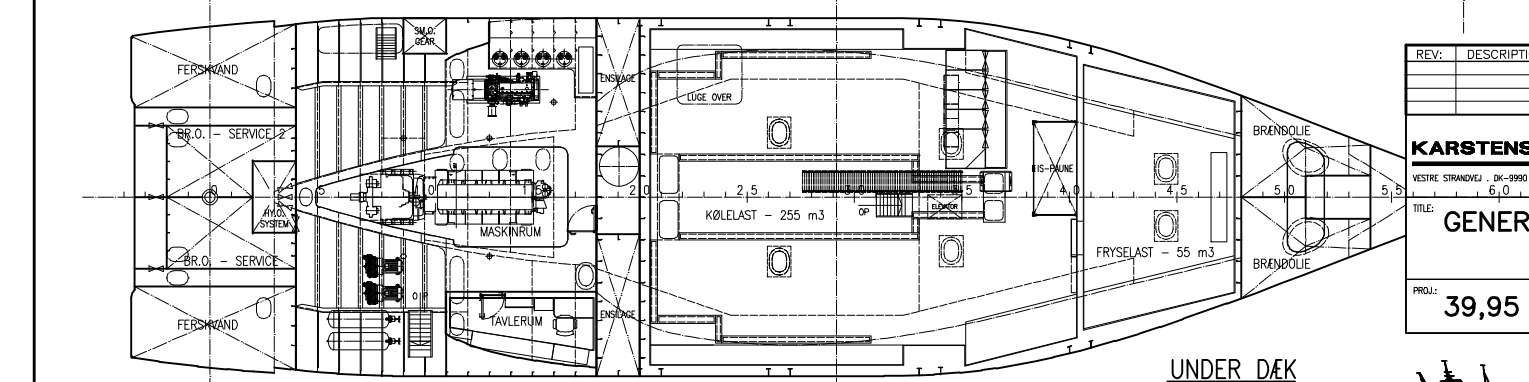
BRENDOLIE	100 m3
FERSKVAND	20 m3
FOREPEAK	25 m3
KØLELAST	255 m3
FRYSELAST	55 m3
INDFRYSER	60 m3
TONNAGE	575 GT
APTERING	10 mand




HOVEDDÆK

**HOVEDDIMENSIONER:**

LÆNGDE OVERALT	39,95 m
LÆNGDE MELLEM PP	35,00 m
REGELLÆNGDE (ITCC -69)	35,00 m
BREDE MOULDED	10,00 m
DYBDE HOVEDDÆK	4,10 m
DYBDE SHELTERDÆK	6,50 m
DYBGANG KVL	4,10 m
DYBGANG AGTER (TIL KVL)	5,40 m
SPANTEAFSTAND	600 mm



UNDER DÆK

REV:	DESCRIPTION:	DATE APPR:	DATE REV:	SIGN:
<b>KARSTENSEN SHIPYARD A/S</b> 		SCALE: 1:100	DATE: 2008.11.06	
VESTRE STRANDVEJ · DK-9990 SKAGEN · PHONE +45 98441311 · FAX +45 98445411		PAPER: A1	SIGN: KD	
<b>GENERALARRANGEMENT</b>		CLASS: DMA		
PROJ: 39,95 m TRAWLER		APPR:	REV	
		SHEET 1 OF 1		
		DRWG.NO.:	406-101-001	

