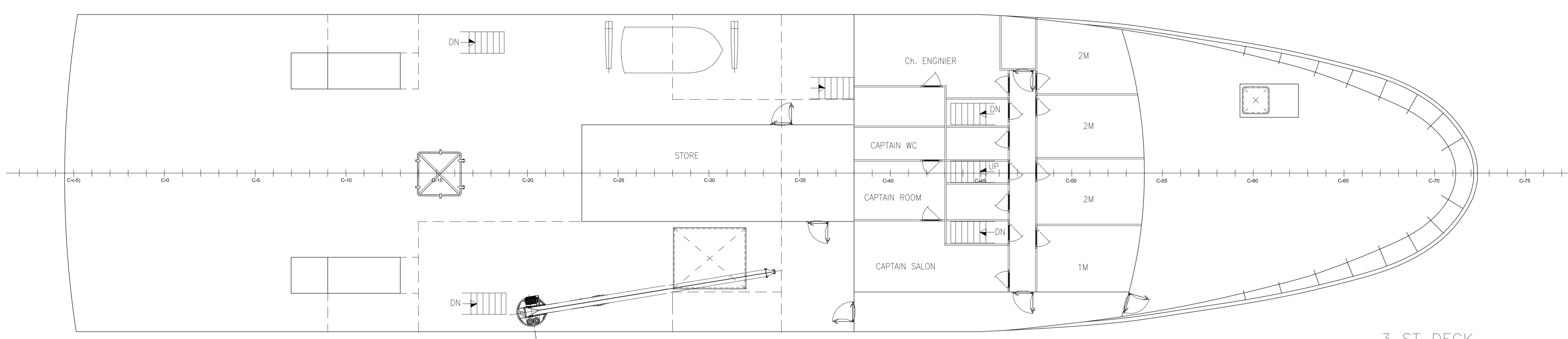
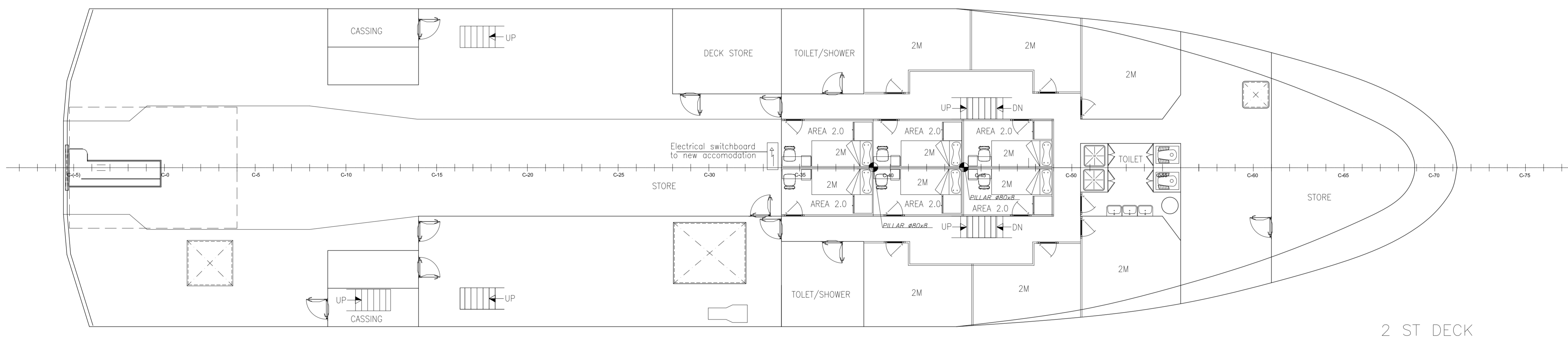


DECK PILOT BRIDGE

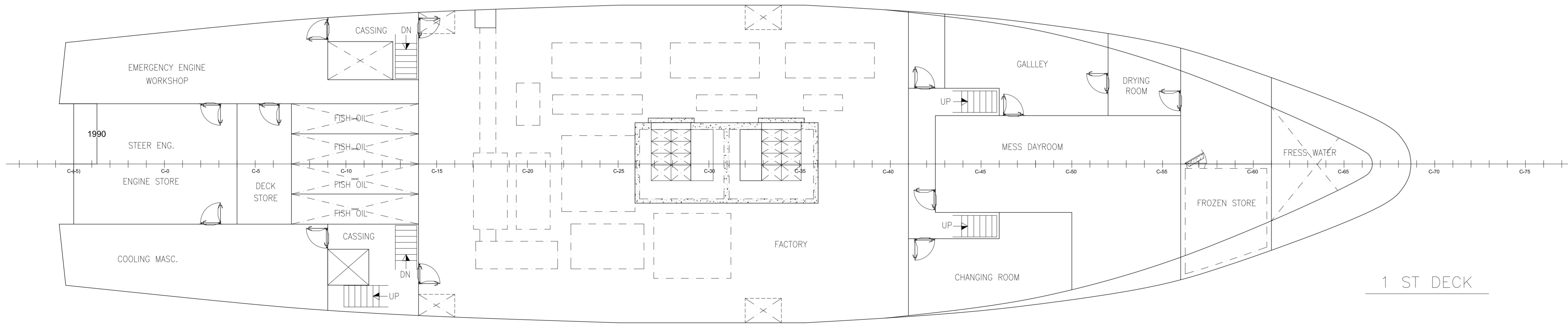
PROFILE



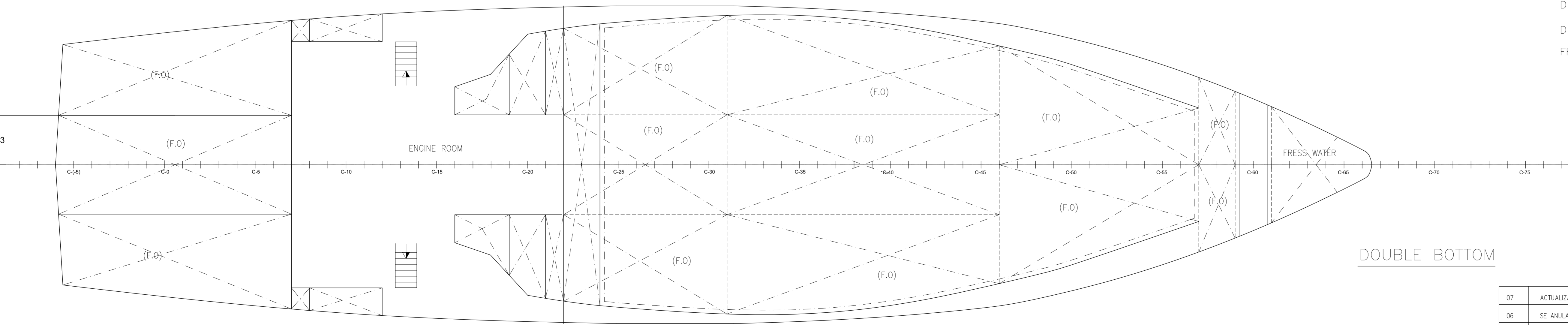
3 ST DECK



2 ST DECK



1 ST DECK



DOUBLE BOTTOM

CHARACTERISTICS

LENGHT OVER ALL	47.00 M
LENGHT BETW PREP	39.50 M
BREADTH MLD	10.50 M
DEPTH TO 1 ST DECK	4.75 M
DEPTH TO 2 ST DECK	7.10 M
FRAME SPACING	0.60 M

REV.	DESCRIPTION	BY	DATE	CHECKED	DATE
07	ACTUALIZACIÓN ESCOTILLA	MANUEL	05-11-13	J.R.ANTON	05-11-13
06	SE ANULA PAROL CTA 3 Y SE AÑADE PAROL SOBRE CTA. 3	MANUEL	04-11-13	J.R.ANTON	04-11-13
05	SE ANULA HUECO PESCA Y SE AÑADE ESCOTILLA	MANUEL	31-10-13	J.R.ANTON	31-10-13
04	REFORMAS ESTRUCTURALES VARIAS	MANUEL	07-10-13	J.R.ANTON	07-10-13
03	MODIFICADO SEGUN NOTAS (PASILLO ACCESO PAROL)	ROBERTO	28-1-13	J.R.ANTON	23-1-13
02	MODIFICADO SEGUN NOTAS ARMADOR Y FACTORIA DE PESCA.	ROBERTO	22-1-13	J.R.ANTON	22-1-13
01	PRELIMINAR	ROBERTO	8-1-13	J.R.ANTON	8-1-12

F. CARCELLER		Ingenieros Navales - Colaboradores		Tel: +34 958 43 05 00	
Faustino Carceller S.L.		Calle Hermanos Rizo, nº 22 entre 36201 Yago (España)		Fax: +34 958 43 07 85	
PROJECT Nº	1183-13-005	VESSEL:	M/S ANITA	BUILT Nº	000
DRAWING Nº	001	DESCRIPTION :	GENERAL ARRANGEMENT		
REVISION	07	DESTINY :			
FORMAT	AD	DRAWN	CHECKED	DATE	SCALE
		ROBERTO	J.R.ANTON	8-1-13	1:75
					SHEETS 1
					SHEET Nº 1

THIS DRAWING IS THE COPYRIGHT AND THE PROPERTY OF FAUSTINO CARCELLER S.L. IT MUST NOT BE COPIED (IN WHOLE OR IN PART), WITHOUT PRIOR WRITTEN CONSENT OF FAUSTINO CARCELLER S.L.