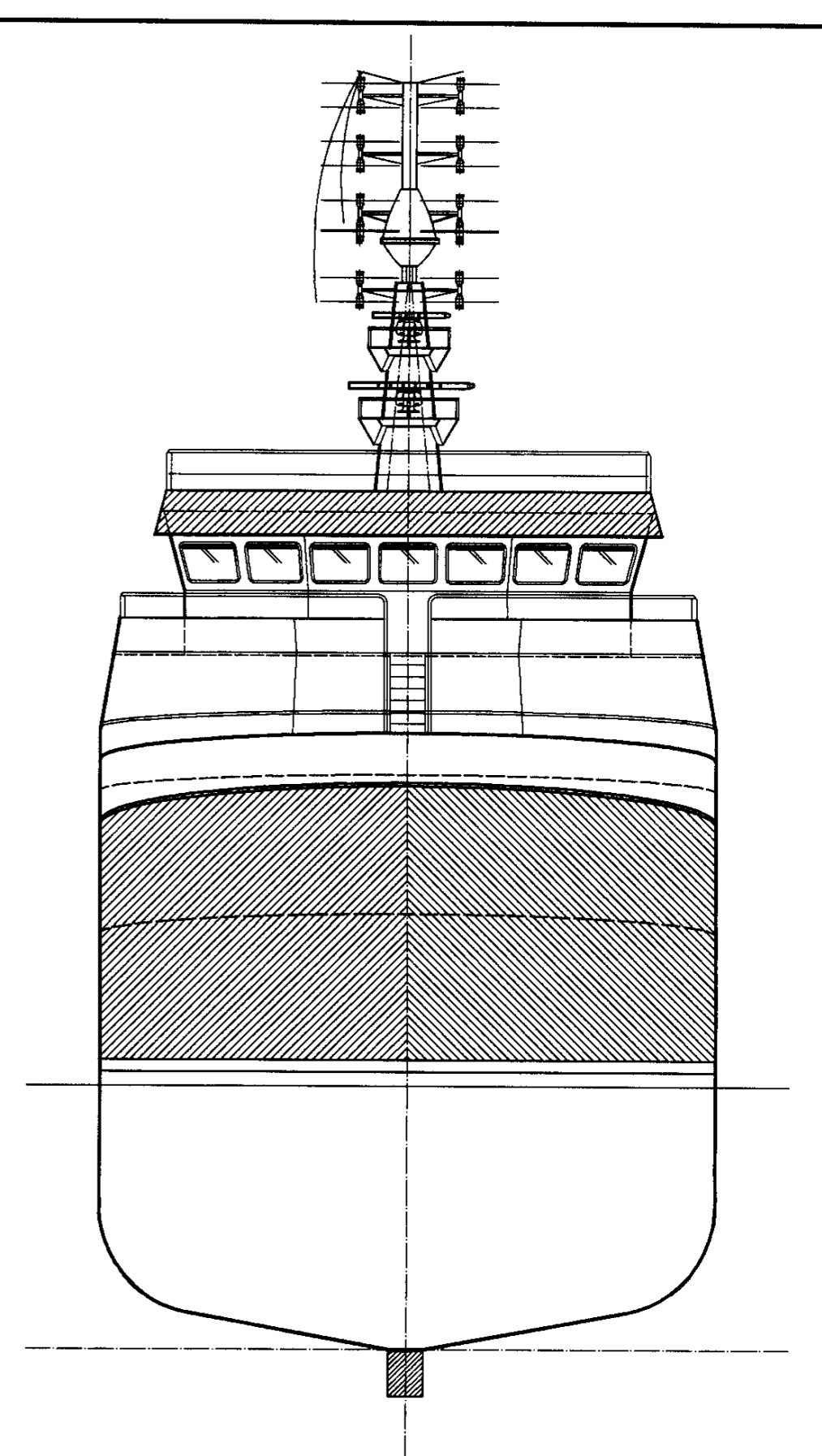
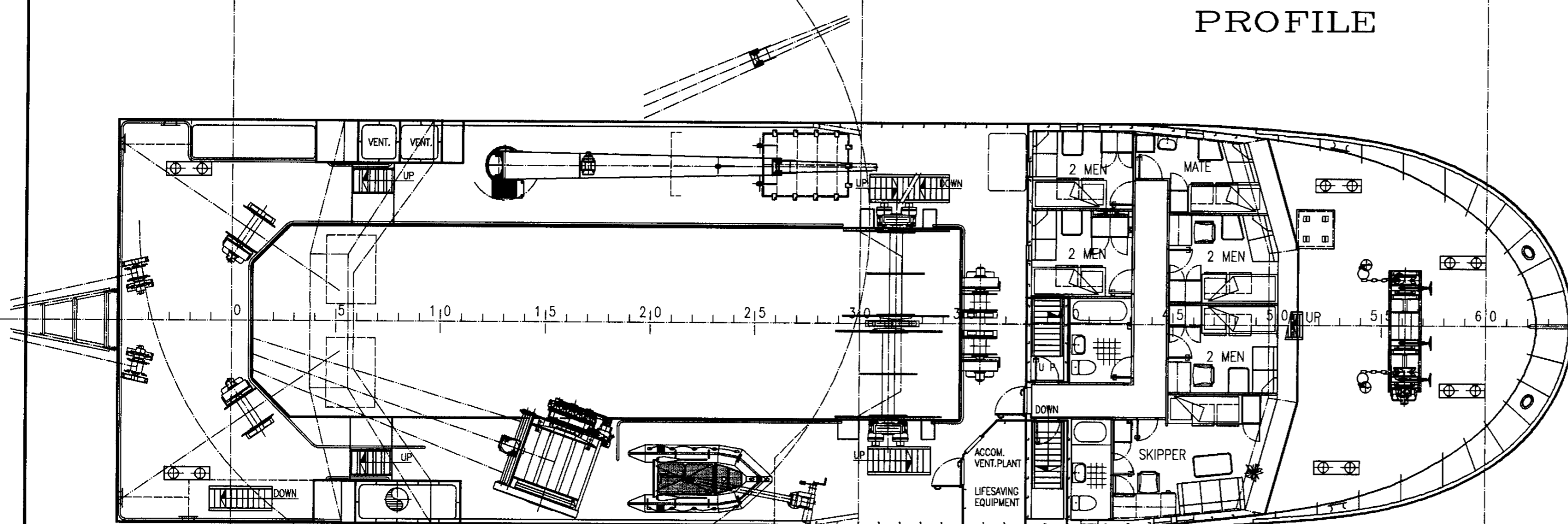


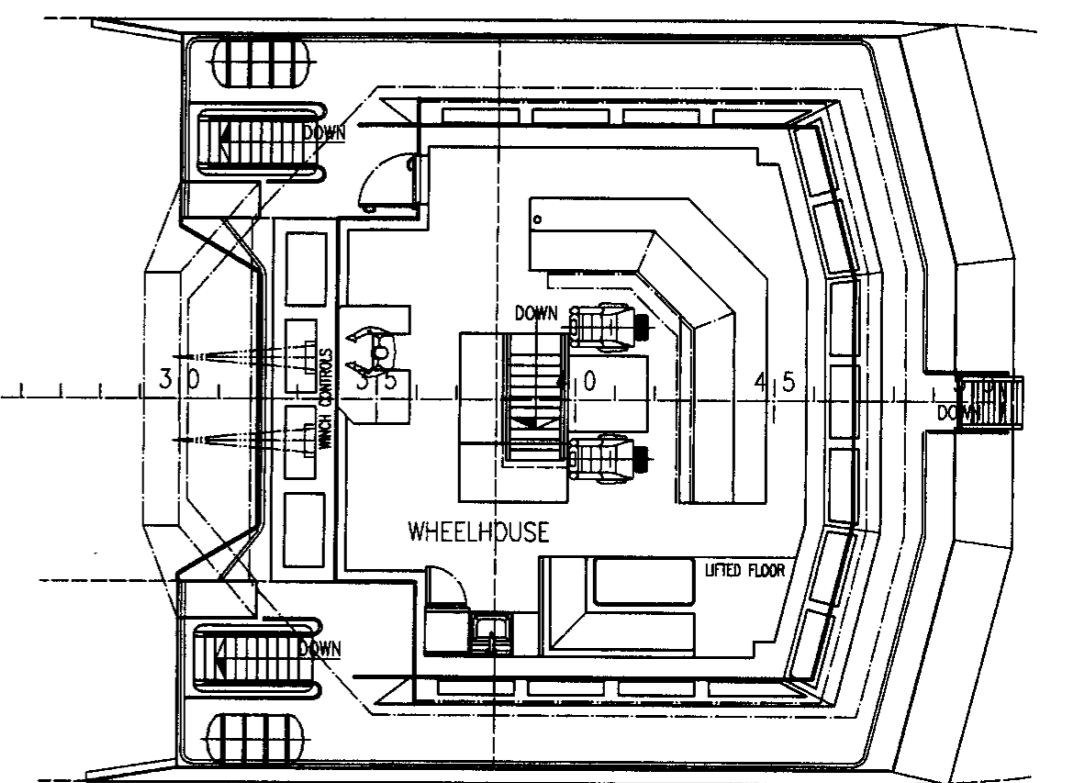
PROFILE



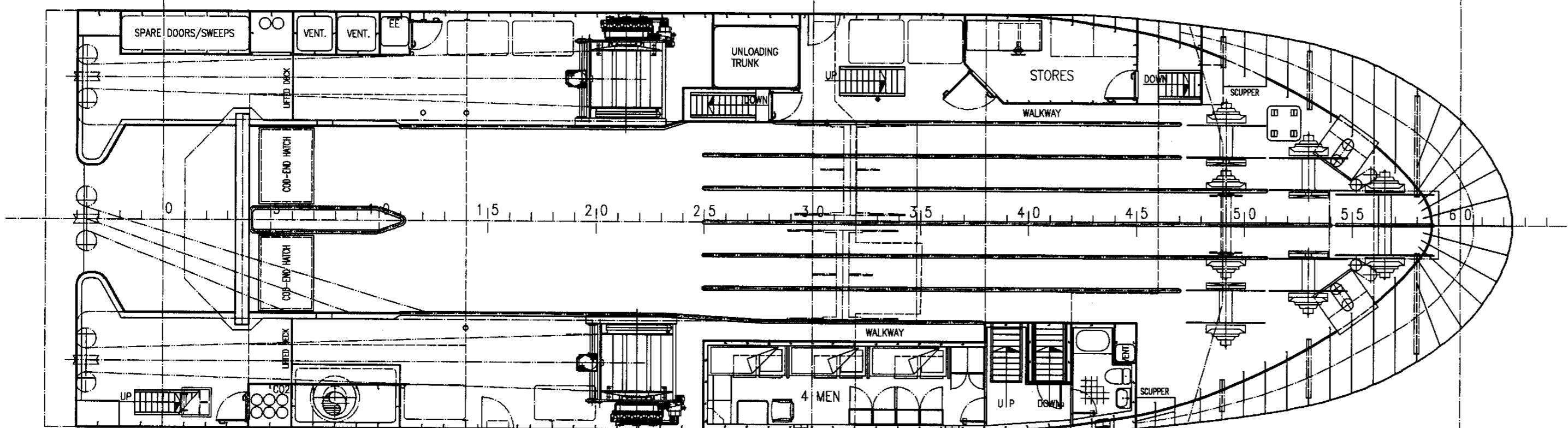
FRONT VIEW



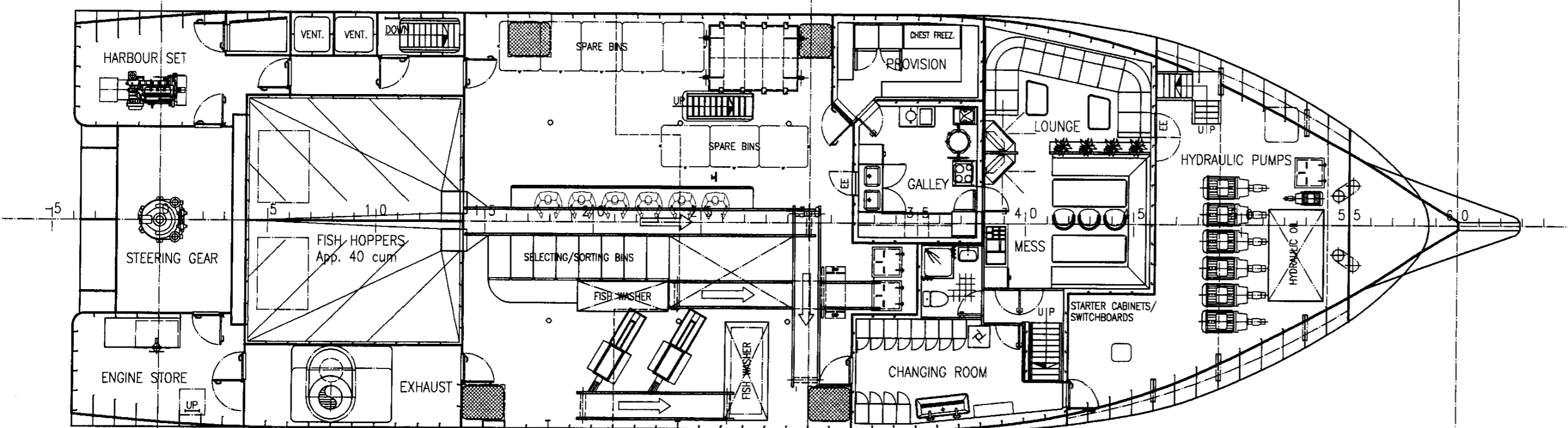
FORECASTLE DECK



BRIDGE DECK



SHELTER DECK



MAIN DECK

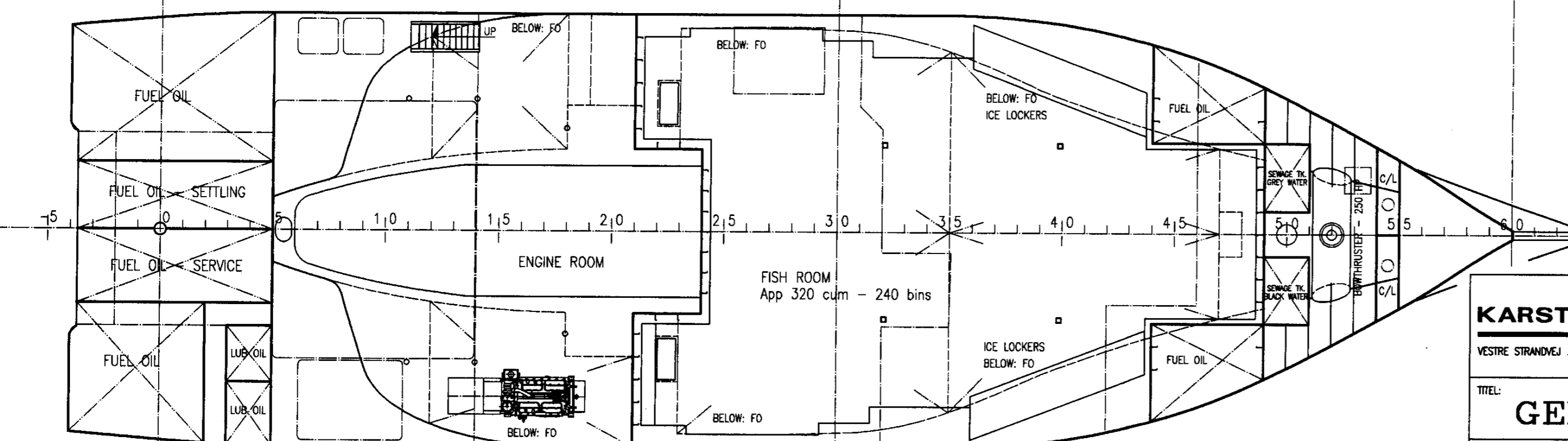
CAPACITIES:

FUEL OIL	160 cum
FRESH WATER	25 cum
FISH ROOM	320 cum
	240 BINS
ACCOMMODATION	14 men

MAIN DIMENSIONS:

LENGTH OVERALL	38,30 m
LENGTH BETWEEN PP	32,85 m
LENGTH REGISTERED (ITCC -69)	32,78 m
BREADTH MOULDED	10,50 m
DEPTH MAIN DECK	4,50 m
DEPTH SHELTER DECK	6,85 m
DRAUGHT CONSTRUCTION WL	4,50 m
DRAUGHT AFT	6,00 m
FRAME SPACING	550 mm

CLASS: DnV + 1A1-ICE 1C-STERN TRAWLER



KARSTENSEN SHIPYARD A/S

VESTRE STRANDEJ. DK-8990 SKAGEN. PHONE +45 98441311 - FAX +45 98443411



SCALE: DATE: 99.09.24

1:100 SIGN: KENT DAMGAARD

APPROVED:

GENERAL ARRANGEMENT

38,30 m TRAWLER

DRAWING NO.: 382-101-01

REV.	DESCRIPTION:	DATE APPR.	DATE REV.	SIGN:
A	ACCOMMODATION, HULL MARKING, FISH HANDLING DECK, ANTENNAS ETC.		2000.09.07	LS
B	SEWAGE TANKS CHANGED TO #49-S1, ORIGINAL CHANGED TO FD-TANKS		2000.12.05	JL

