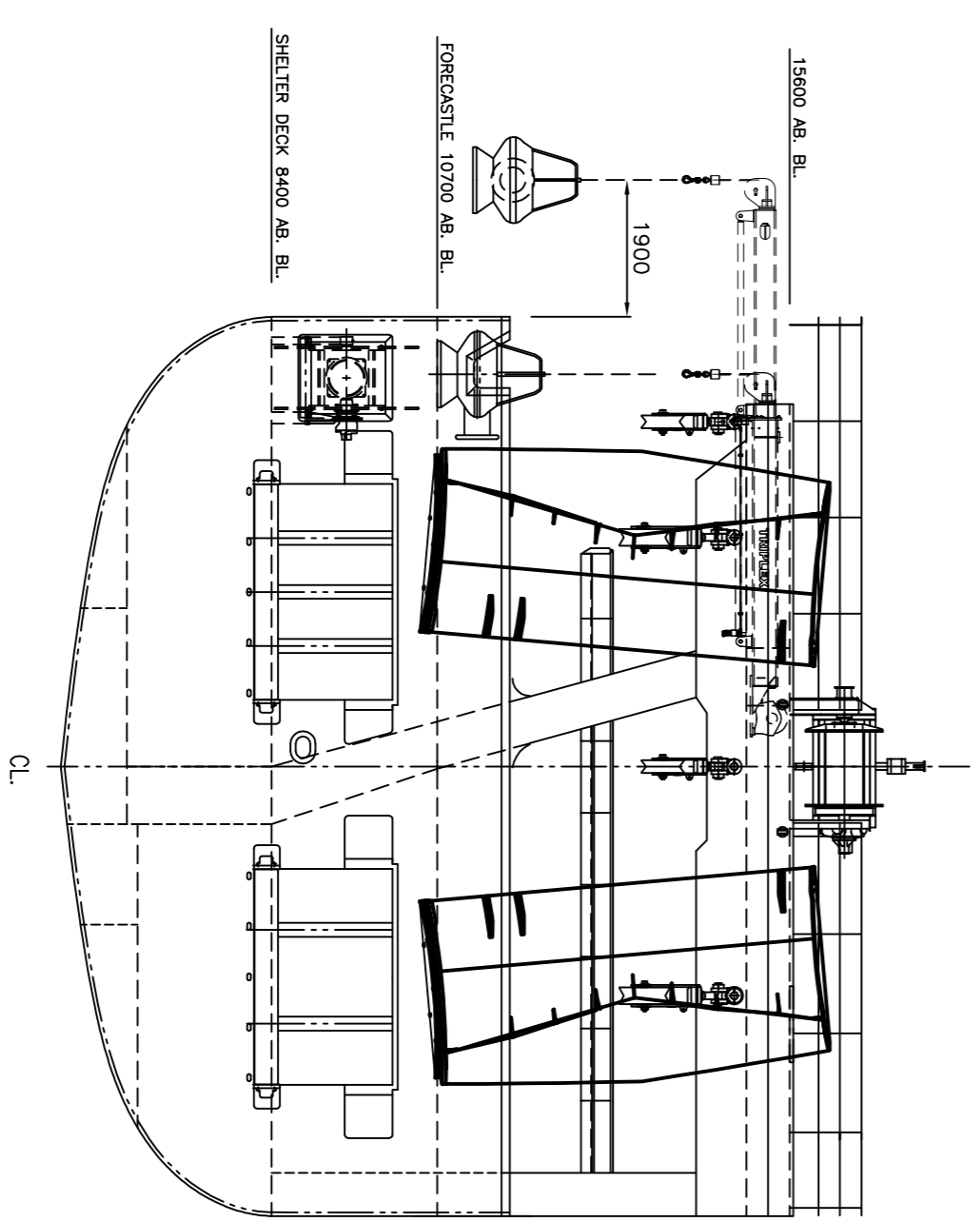
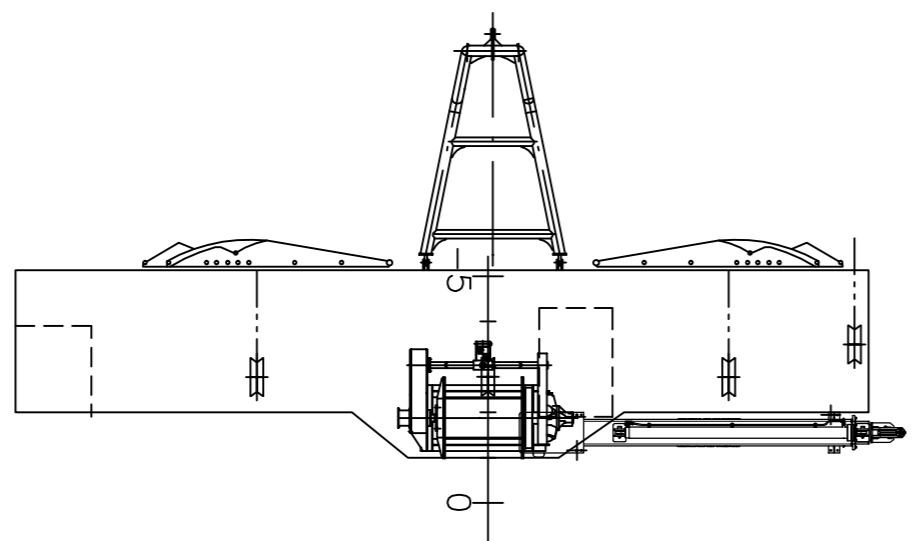


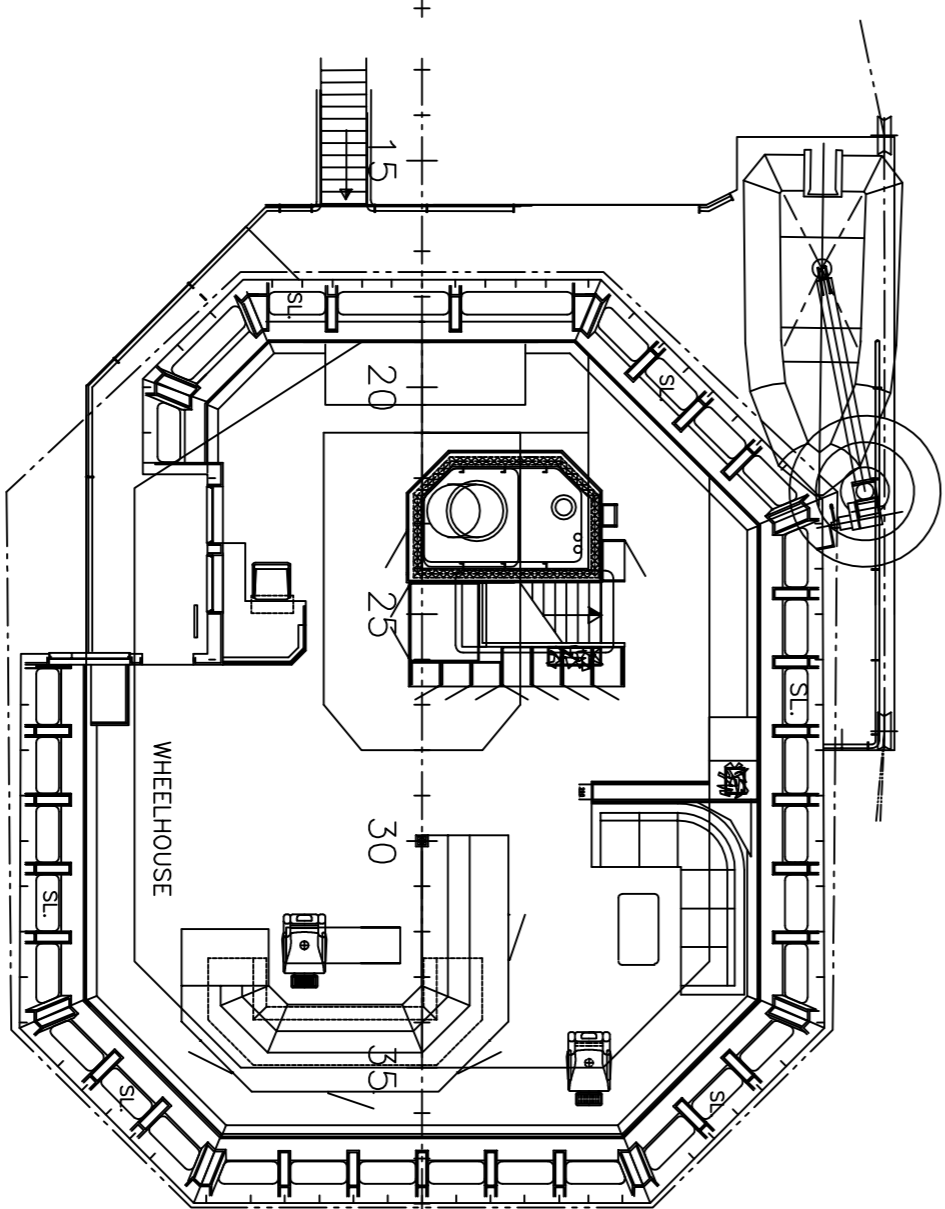
PROFILE



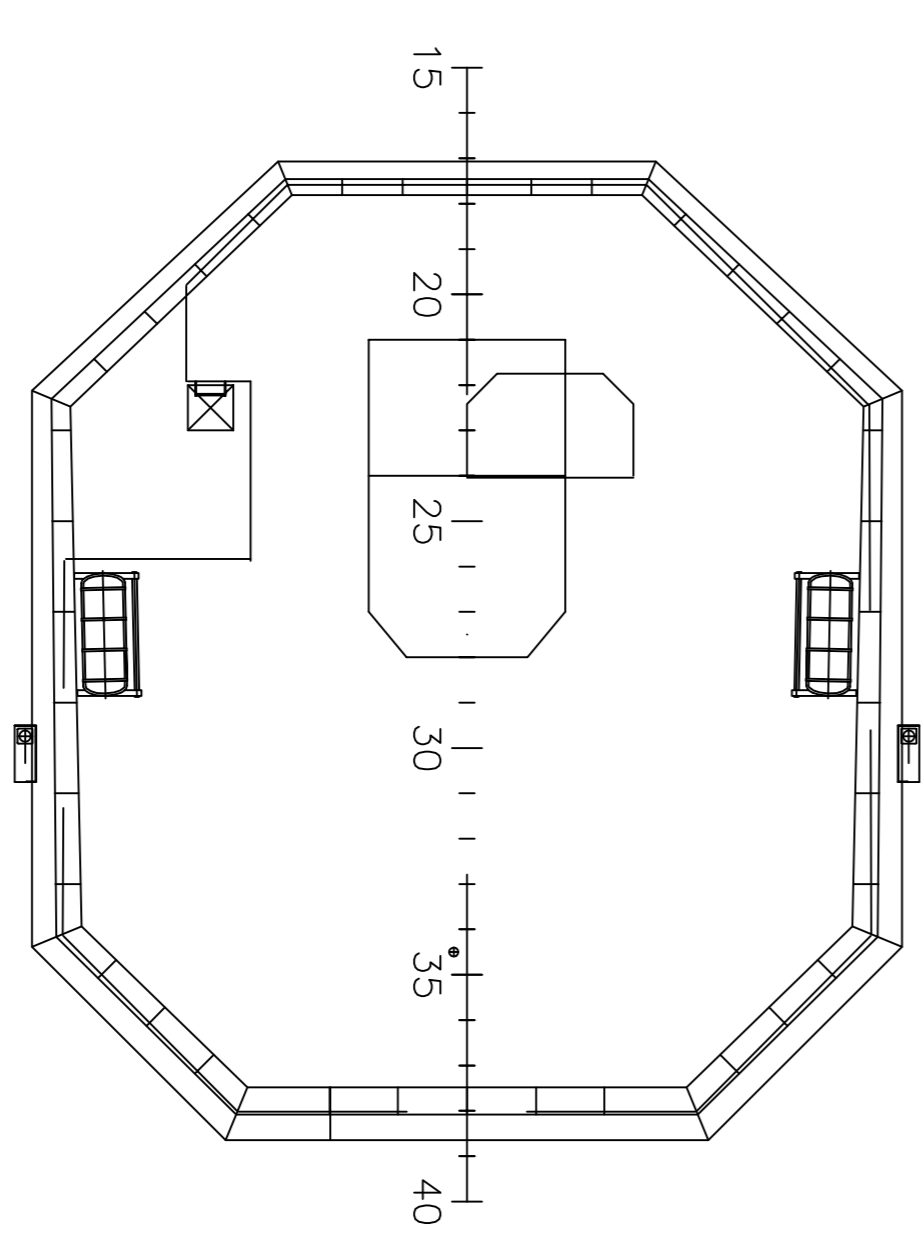
TRANSOM
LOOKING FWD.



GALLOW TOP.



WHEELHOUSE
DK4



WHEELHOUSE ROOF
DK5

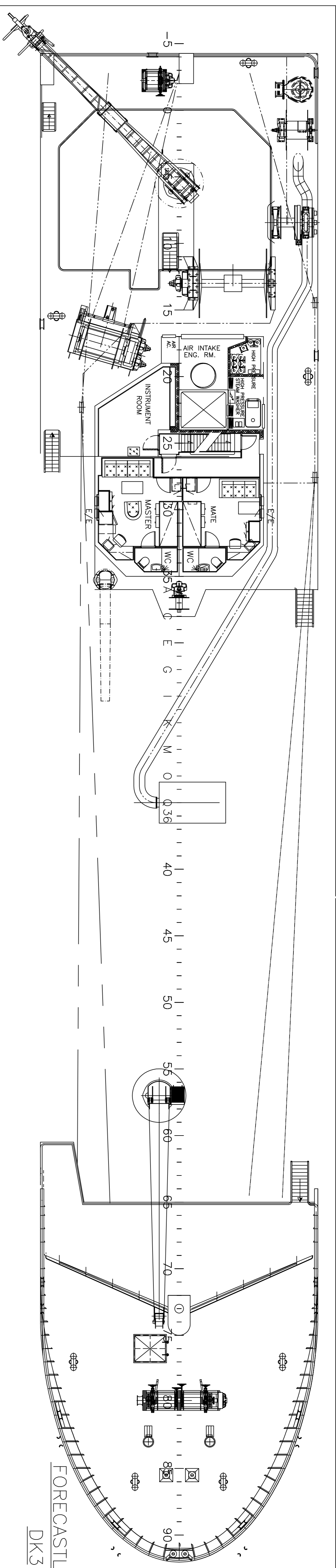
REV.	DESCRIPTION	DATE	SIGN.
B	Conversion 2016	11.03.16	BØb.

CLIENT:		FORMER NAMES:	
c/o Per Kjell Vågshoim Kleivdals 13, 6090 Fosnavåg		Akerøy II Aker Jupiter Polhavoy I Polhavoy Ø/N 89 dt Sirek AS	
TITLE:		SCALE:	
GENERALARRANGEMENT M/S HERØYFJORD - LAXI		1:1100	
PROJECT NO.:		DATE:	
15199		10.12.2015	
DRAWING NO.:		SHEETS:	
164282		1/2	
REV.:		REV.:	
B		B	
CADD FILE:		1442821.DWG	

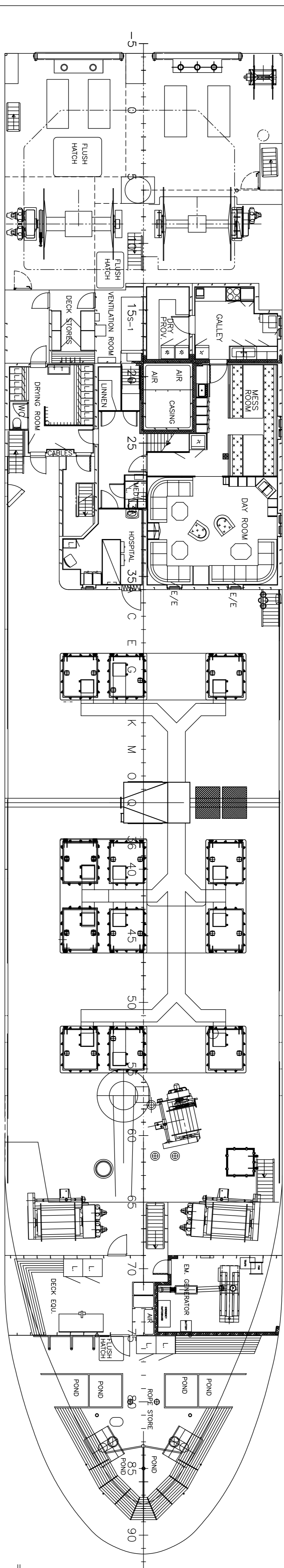
Refering to conversion of Page 371 march 1981 for the "Protection of Industrial Property", we emphasize that technical drawings, descriptions, models, specifications etc. belong to the designing firm, and cannot be made public, copied or otherwise used without the written consent of our firm.



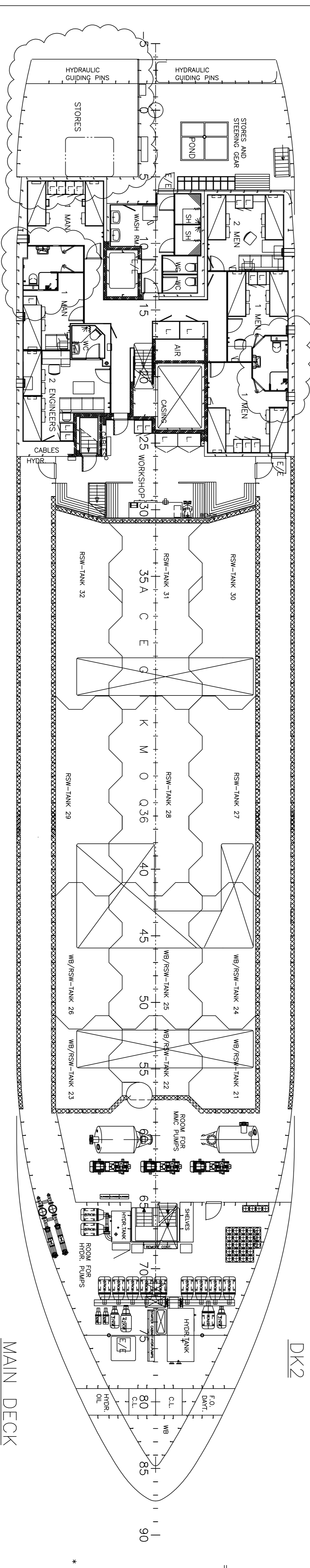
ROSDØ 877, NARHØI, HESTRÅL, NORWAY



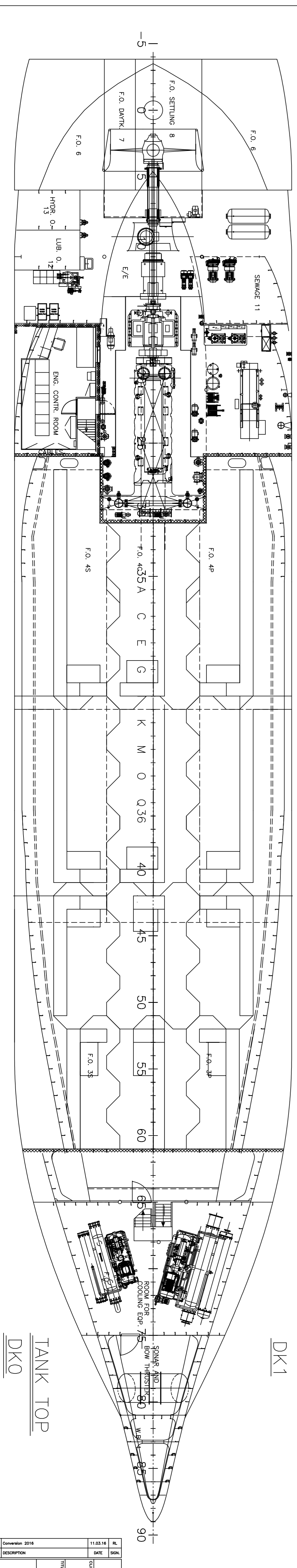
FORECASTLE DECK
DK3



SHELTERDECK
DK2



MAIN DECK
DK1



TANK TOP
DK0

CAPACITIES APPR:
 RSW TANKS APPR. 2000 M3
 FUEL OIL APPR. 330 M3
 FRESH WATER APPR. 42 M3
 WATER BALLAST APPR. 100 M3

MAIN DIMENSIONS:
 LENGTH O.A. = 67.90 M *
 LENGTH BETW. PERP. = 61.80 M *
 BREADTH MID. = 12.50 M
 DEPTH TO 1. DECK = 5.55 M
 DEPTH TO 2. DECK = 8.00 M
 DRAUGHT TO C.W.L. = 5.20 M
 LOADED DRAUGHT = 6.40 M
 FRAME SPACING = 600 MM

* INKLUDERT FORLENGELSE 10.20 M

REV.	DESCRIPTION	DATE	BY	CHK.
11.03.16	Conversion 2016			

Total AS
 2/4 - Polarkonsult
 Kvaløya 13, 8090 Kvernberga
 M/S HENRIKSDONN - LXII

SCALE: 1:100
 SHEETS: 2/2
 PROJECT NO.: 15199
 CONTRACT NO.: 164282

POLARKONSULT
 POLARADVISORS & MARINE ENGINEERS
 PROJEKT AV MARINERISKE KJØYER